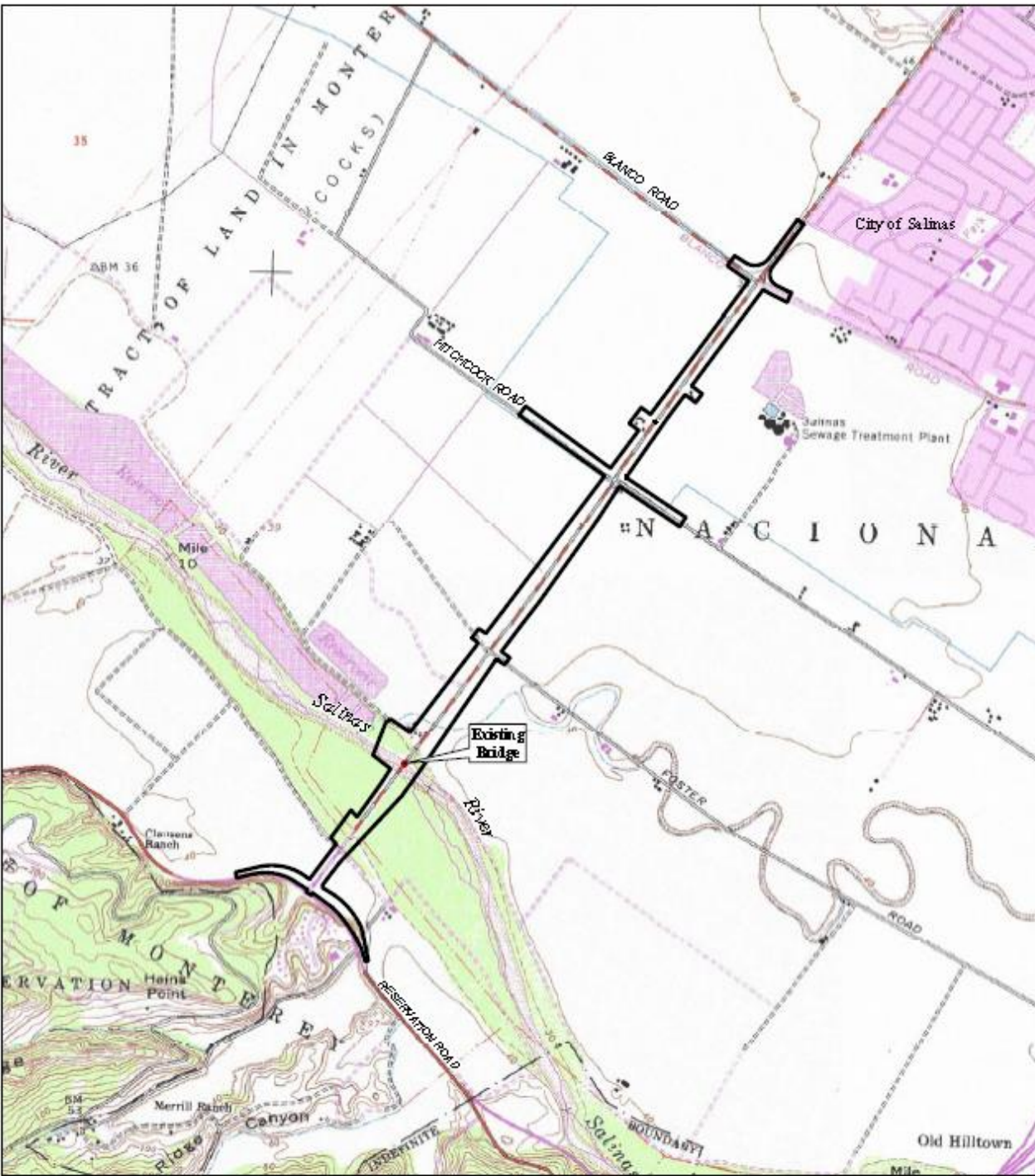


# **DAVIS ROAD BRIDGE REPLACEMENT AND ROAD WIDENING PROJECT**

**Monterey County Department of  
Public Works, Parks & Facilities  
August 3, 2022**



➤ **Project Limits**

Blanco Road to Reservation Road

➤ **Project Elements**

1. All weather crossing over Salinas River
2. Four-lane Davis Road
3. Roundabout at Reservation/Davis Intersection
4. Class II bike lanes along Davis Road
5. Bus Queue jump lane at Davis Rd/Blanco Rd
6. Intersection improvements at Foster and Hitchcock

➤ **Regional Transportation Plan Consistency**

Salinas-Marina Multimodal Corridor  
FORA Base Re-use Plan

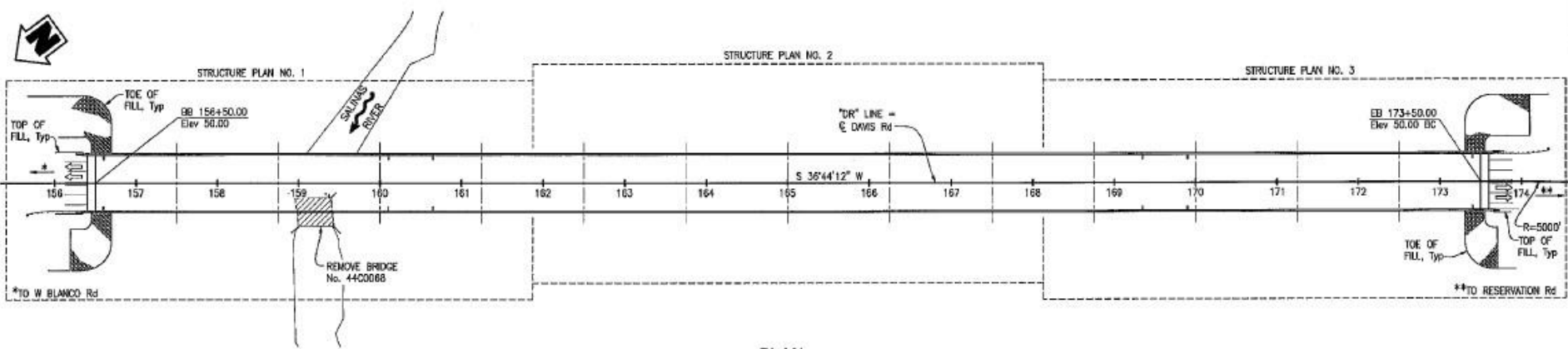
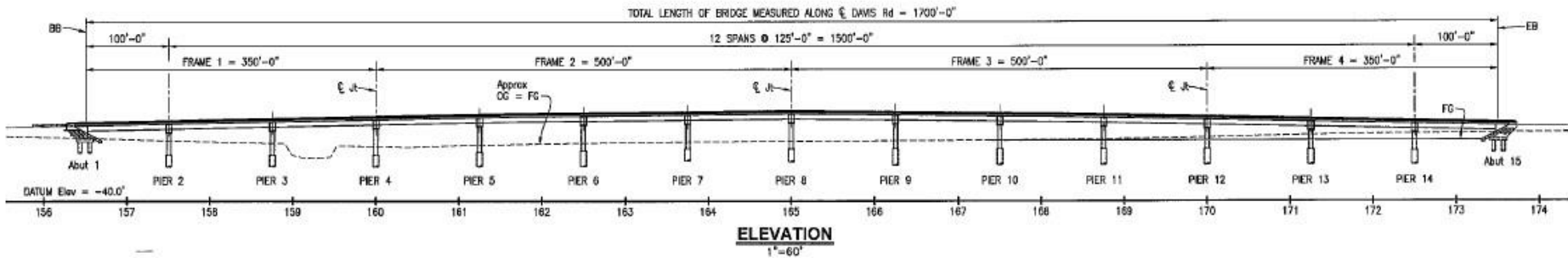
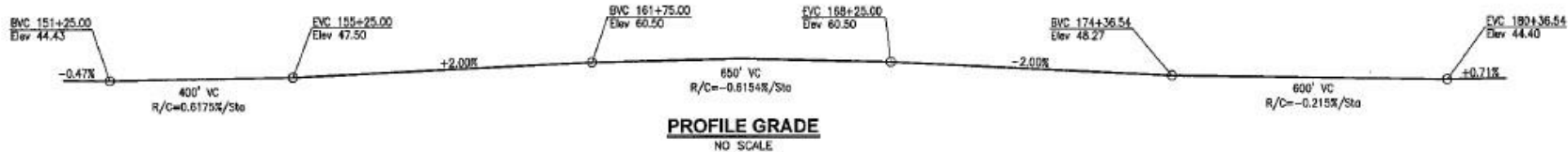








SHEET NUMBER	TOTAL SHEETS



**CURVE DATA "DR" LINE**  
 R = 5000.00'  
 Δ = 2°31'15"  
 T = 110.01'  
 L = 219.99'

- LEGEND:**
- Indicates Existing Structure
  - Indicates New Structure
  - ▨▨▨▨ Indicates Bridge Removal
  - Indicates Direction of Flow
  - ↔ Indicates Direction of Traffic

- NOTES:**
- For typical sections, see "GENERAL PLAN NO. 2" sheet.
  - For additional information, see "STRUCTURE PLAN NO. 1, 2 and 3" sheets.

**100% SUBMITTAL  
 NOT FOR CONSTRUCTION**

B-1

Submitted by: **M. BURNANI 38634**  
 Design Engineer C.E. No.  
 Drawn by: **B. SCHORPE** Check by: **C. FINKERTON**  
 Drawn by: **G. INESEN** Check by: **C. FINKERTON**  
 Specifications written by: **T. LAMBERT** Check by:  
 Approved Recommended by: \_\_\_\_\_  
 Deputy Public Works Director, Engineering

**TRC**  
 10680 White Rock Rd., Suite 100  
 Rancho Cordova, California 95670

ORIGINAL SCALE IN INCHES  
 FOR REDUCED PLANS



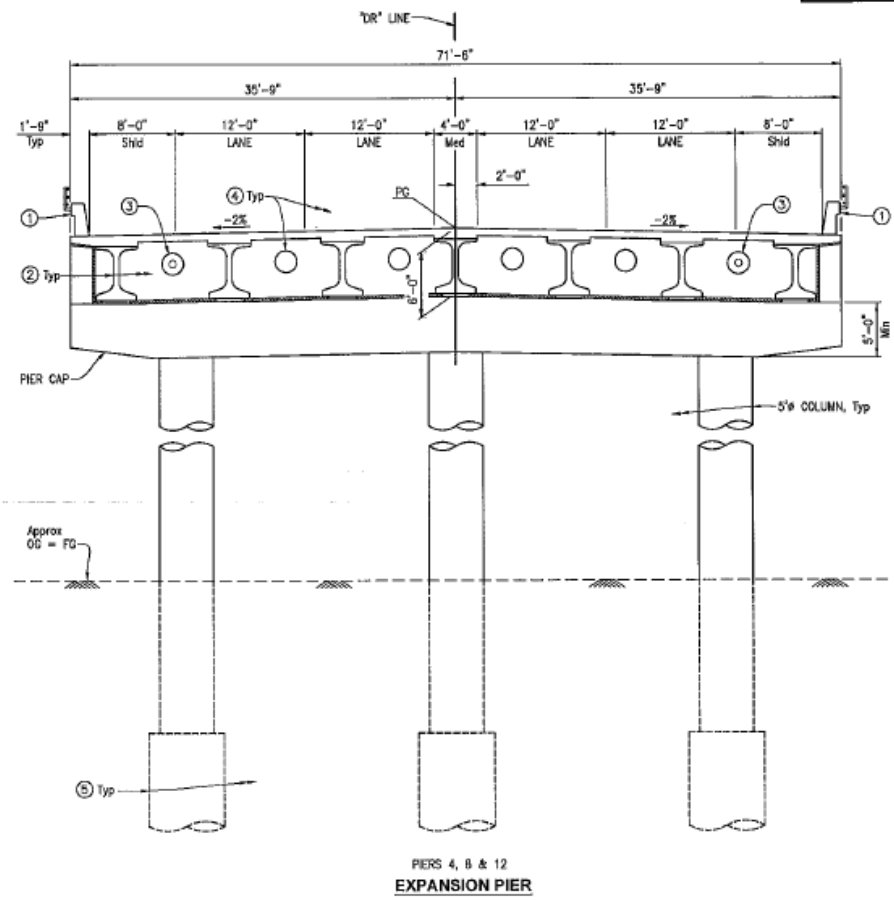
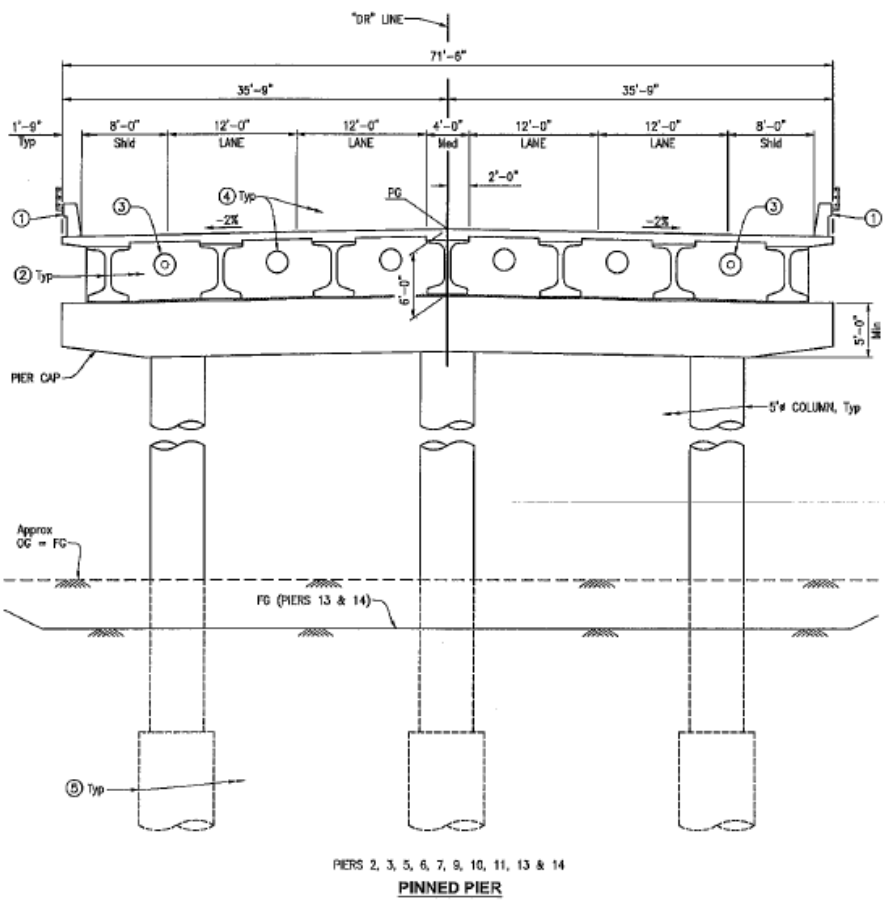
NO.	DATE	REVISION DESCRIPTION	APPROVED

**MONTEREY COUNTY**  
 Resource Management Agency  
 Public Works

1441 SOMERSET PLACE  
 SALINAS, CALIFORNIA 95301  
 (831) 753-4800/FAX (831) 755-4626

**DAVIS ROAD BRIDGE REPLACEMENT AND ROAD WIDENING**  
**GENERAL PLAN NO. 1**  
 STATE NO. 44C0185, URL# 5944(068), COUNTY NO. 208

DATE 10/30/19	FILE	NEW	SHEET 1
SCALE AS SHOWN	CONTRACT NO.		OF 42 SHEETS



**TYPICAL SECTIONS**  
3/16" = 1'-0"

- NOTES:**
- ① Concrete Barrier Type 836 with Tubular Bicycle Rolling
  - ② PC/Prestressed Wide Flange Girder
  - ③ Deck Drainage Utility Opening
  - ④ Future Utility Opening (Tot 4)
  - ⑤ OSS Piling (NPS 84)

100% SUBMITTAL  
NOT FOR CONSTRUCTION

B-2

Submitted by **M. IMBRIANI 36634**  
Design Engineer U.C. No.  
Checked by **B. SCHOPPE**  
Design by **A. CARDOZA**  
Supervising Engineer by **T. LAMBERT**



10680 White Rock Rd., Suite 100  
Rancho Cordova, California 95670

ORIGINAL SCALE IN INCHES  
FOR REPRODUCED PLANS



NO.	DATE	REVISION DESCRIPTION	APPROVED



**MONTEREY COUNTY**  
Resource Management Agency  
Public Works  
1411 SOMERS PLACE  
SALINAS, CALIFORNIA 95301  
(831) 735-4500/FAX (831) 735-4200

DAVIS ROAD BRIDGE REPLACEMENT AND ROAD WIDENING  
**GENERAL PLAN NO. 2**  
STATE NO. 44CD185, BPLS-5944(068) COUNTY NO. 208  
DATE 10/30/19 FILE VIEW SHEET 2  
SCALE AS SHOWN CONTRACT NO. 07 49 14 070

# Project Status

## 1. Work Status.

- Final Design 95% complete
- Coordinating with impacted utility companies
- Negotiating road and construction easements
- Acquiring regulatory permit applications

## 2. Schedule

- Fall 2022: Complete R/W phase
- Spring 2023: Utility relocations
- Fall 2023: Start Construction
- Fall 2025: Complete construction

# Project Status (Con't)

## 3. Funding

- Total Project Estimate \$72.5 million
- Bridge component \$45 million
  - FHWA Highway Bridge Program (88%)
  - Local Funds for federal match (RSTP, Gas Tax)
- Road Widening (\$27.5 M)
  - Local Funds
  - EG development fees (\$1.3M)
  - FORA funds (\$1.8 million)
  - Other grants or impact fees

## 4. Project Risks

- Complete project funding
  - Grants
  - FORA
- R/W issues
- Utility relocation delays